



Biological Inventory of Bainbridge Island Conservation Areas Findings

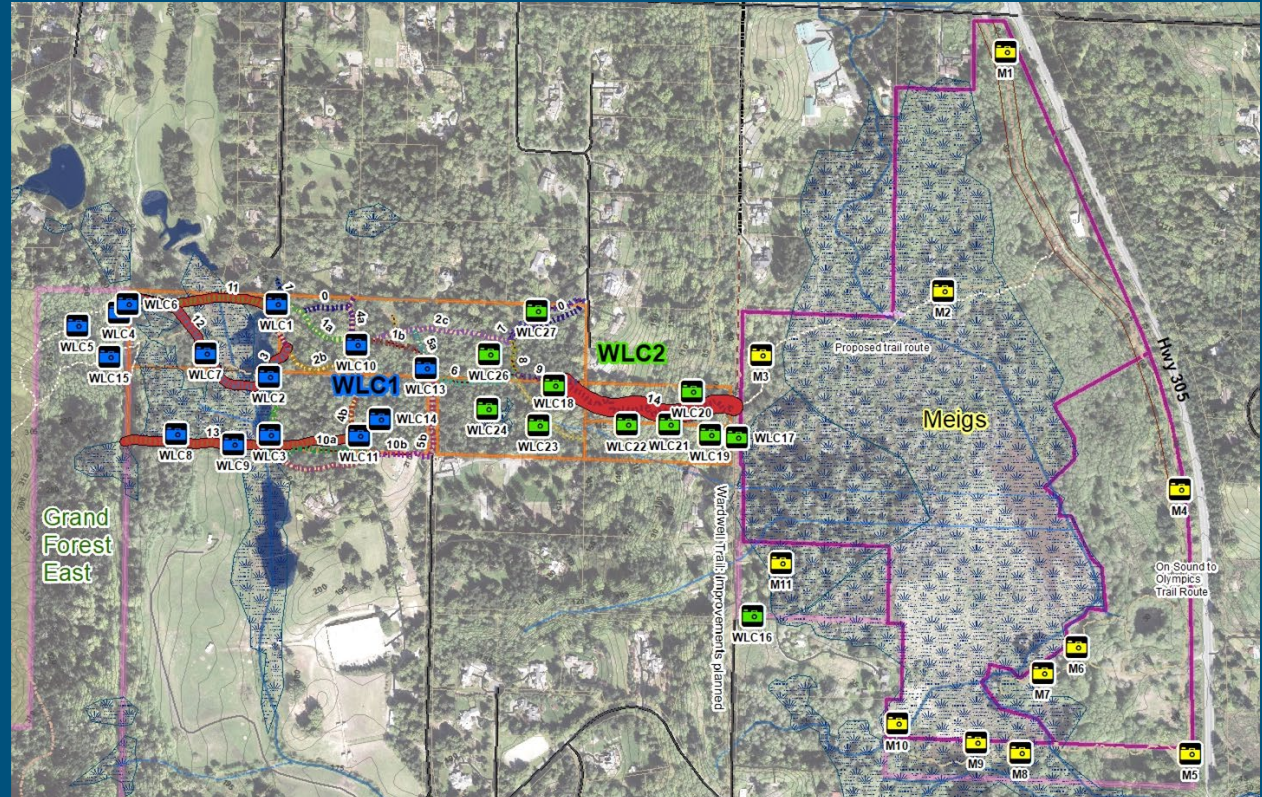


Winter 2019
Prepared by: Ariana Winkler



Study Design

- Three study sites with 36 camera sites in total
 - Three weeks of sampling each
- Four bird surveys
- One amphibian survey



WLC1

- Extensive trails and human usage
- Three highly used sites; WLC1, 10, 13
- Three bird surveys occurred on this site

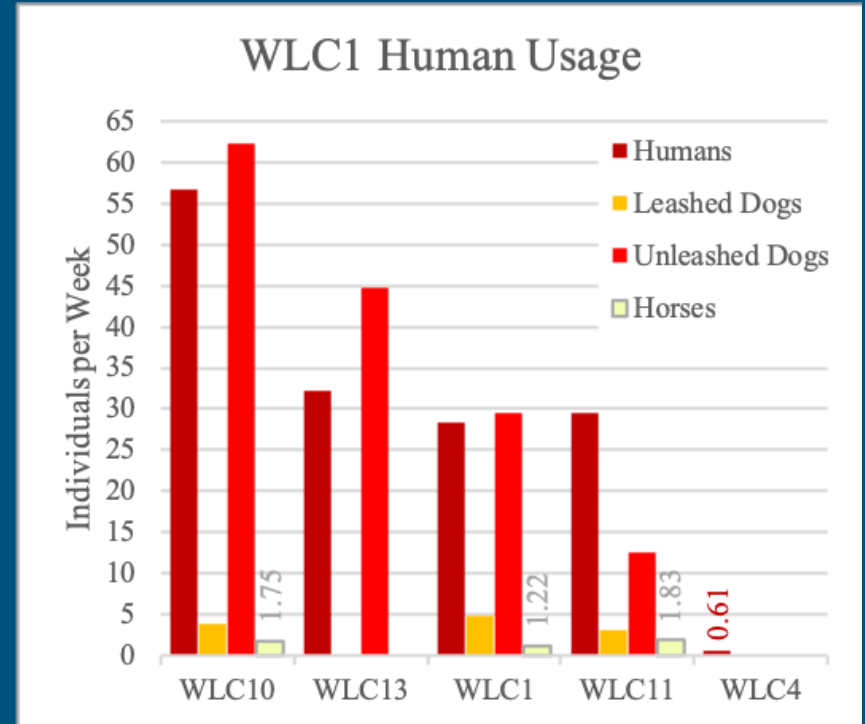


Potential new trail routes in red

Wildlife Legend			WLC1 1st deployment		WLC2 2nd deployment		Mcigs 3rd deployment		People
	Horse		Bicycle		Deer		Douglas Squirrel		Eastern Grey Squirrel
	Coyote		Raccoon		Various Birds		Barred Owl		Pheasant
	Domestic Cat		Opossum		Beaver		River Otter		Muskrat and Mink

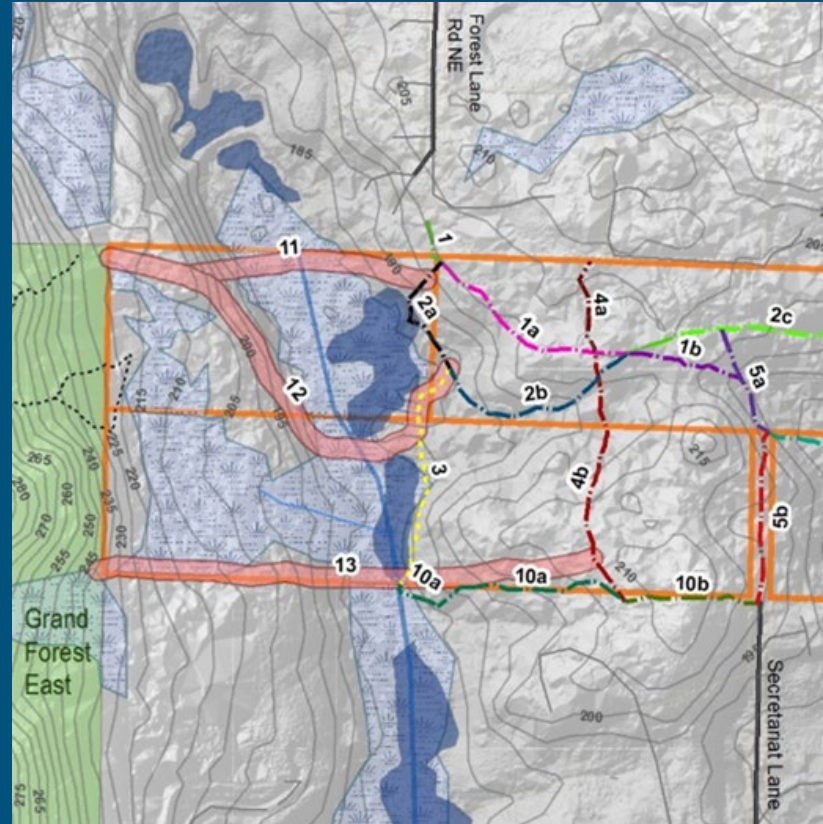
WLC1 Human Usage

- Up to 55 people per week in total
- 80.7% people had dogs
(highest of any study area)
- 92.5% of those dogs were off leash
(highest of any study area)



WLC1 Horse Usage

- *Only study area with horses*
- Seen at sites WLC10, WLC1 and WLC11
- 3% of users had horses
- Five horses and riders used trails 1, 1a, 2a, 2b, 4b, 10b and 13
 - 1 to 1a to 1
 - 10b to 4b to 2b to 2a to 1a to 2b back to 4b to 10 b
 - 10b to 4b to 1b back to 4b to 10a back to 4b to 10b



Proposed Trail Routes in red

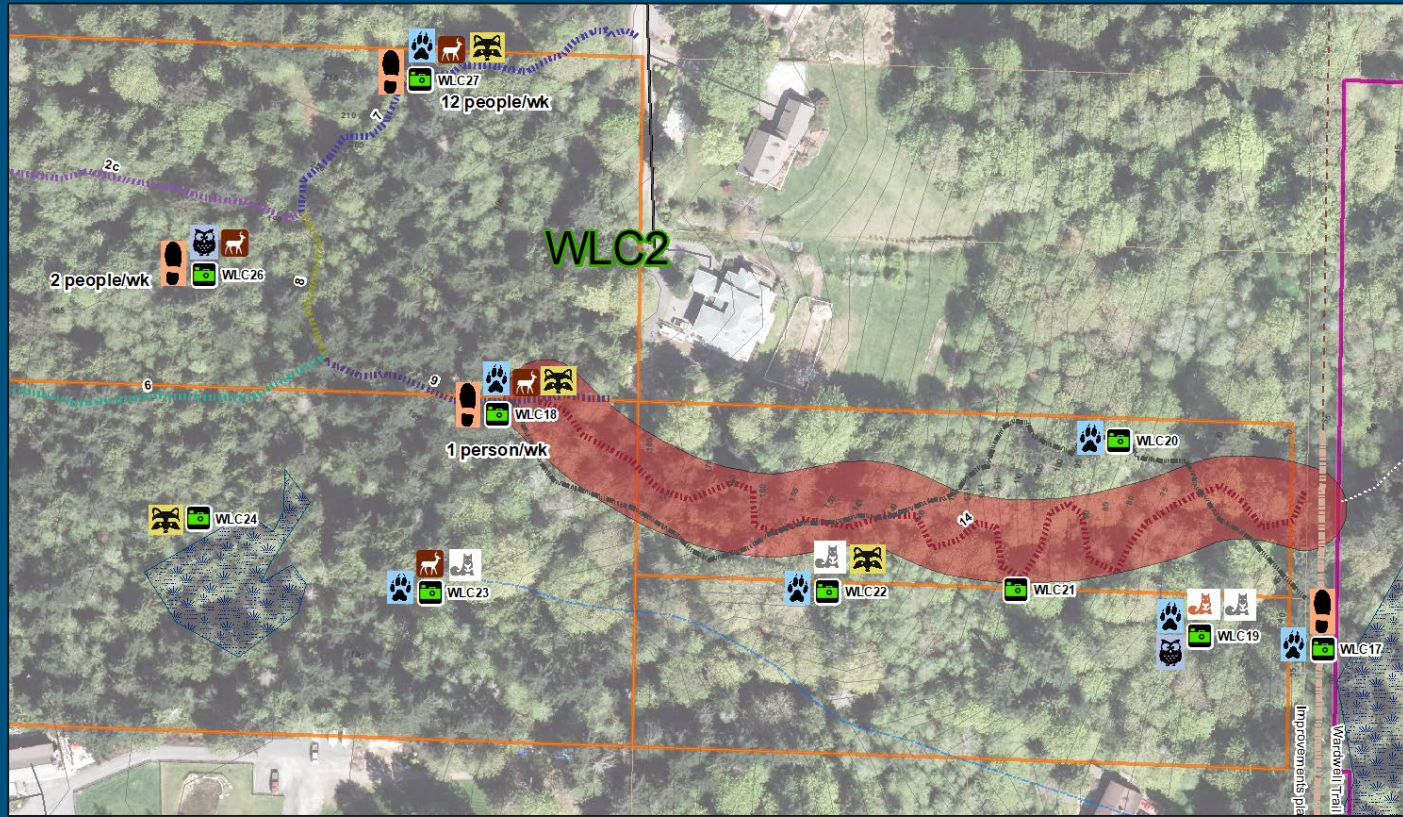
WLC1 Wildlife

- *Lowest wildlife detections of any study area*
- Raccoon
- Coyote
- Deer
- Douglas squirrel
- Eastern grey squirrel
- River Otter
- **Pheasant**
- Over 23 bird species
- NW salamander egg masses
- Rough-skinned newt



WLC2

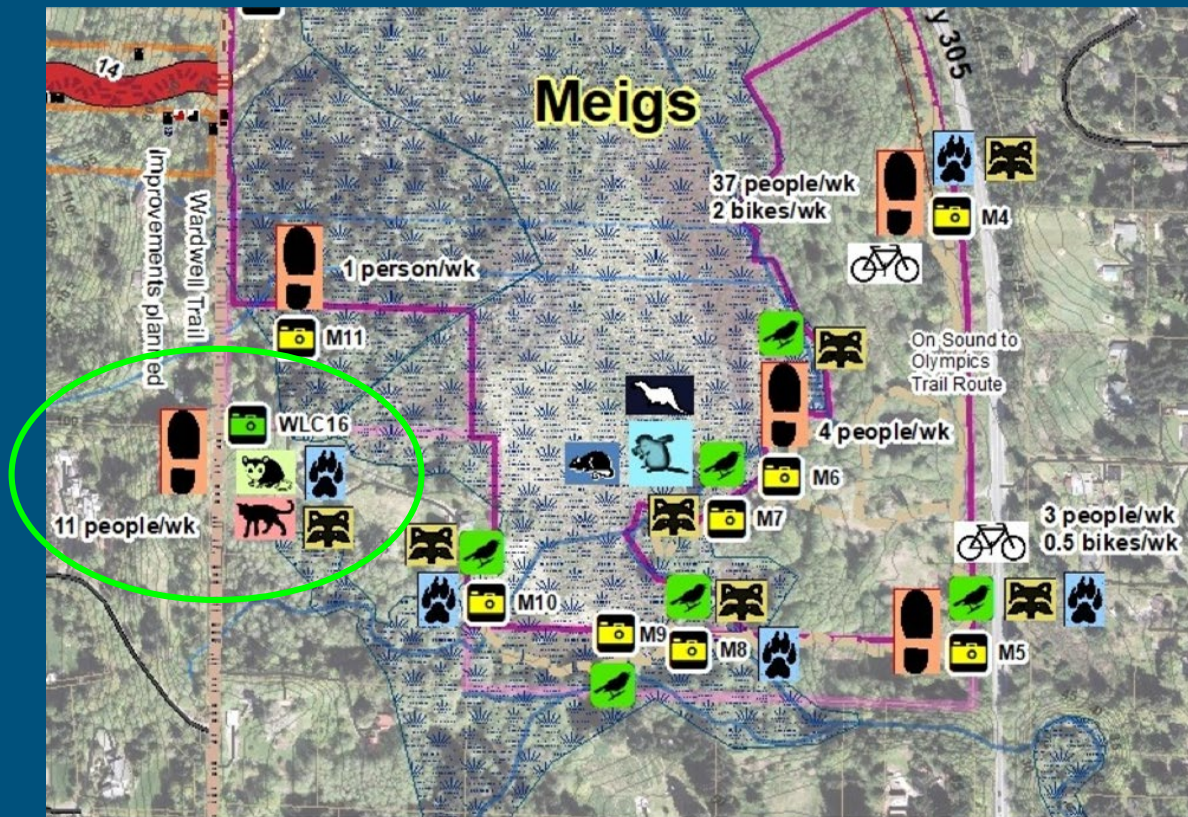
- Small parcel with an overgrown trail system
- Connection with Wardwell Trail
- High wildlife activity
- Four sites experienced moderate usage; WLC16, 18, 26, 27



Potential new trail route in red and gray

Wildlife Legend		WLC1 1st deployment	WLC2 2nd deployment	Meigs 3rd deployment	People
	Horse				
	Coyote				
	Domestic Cat				

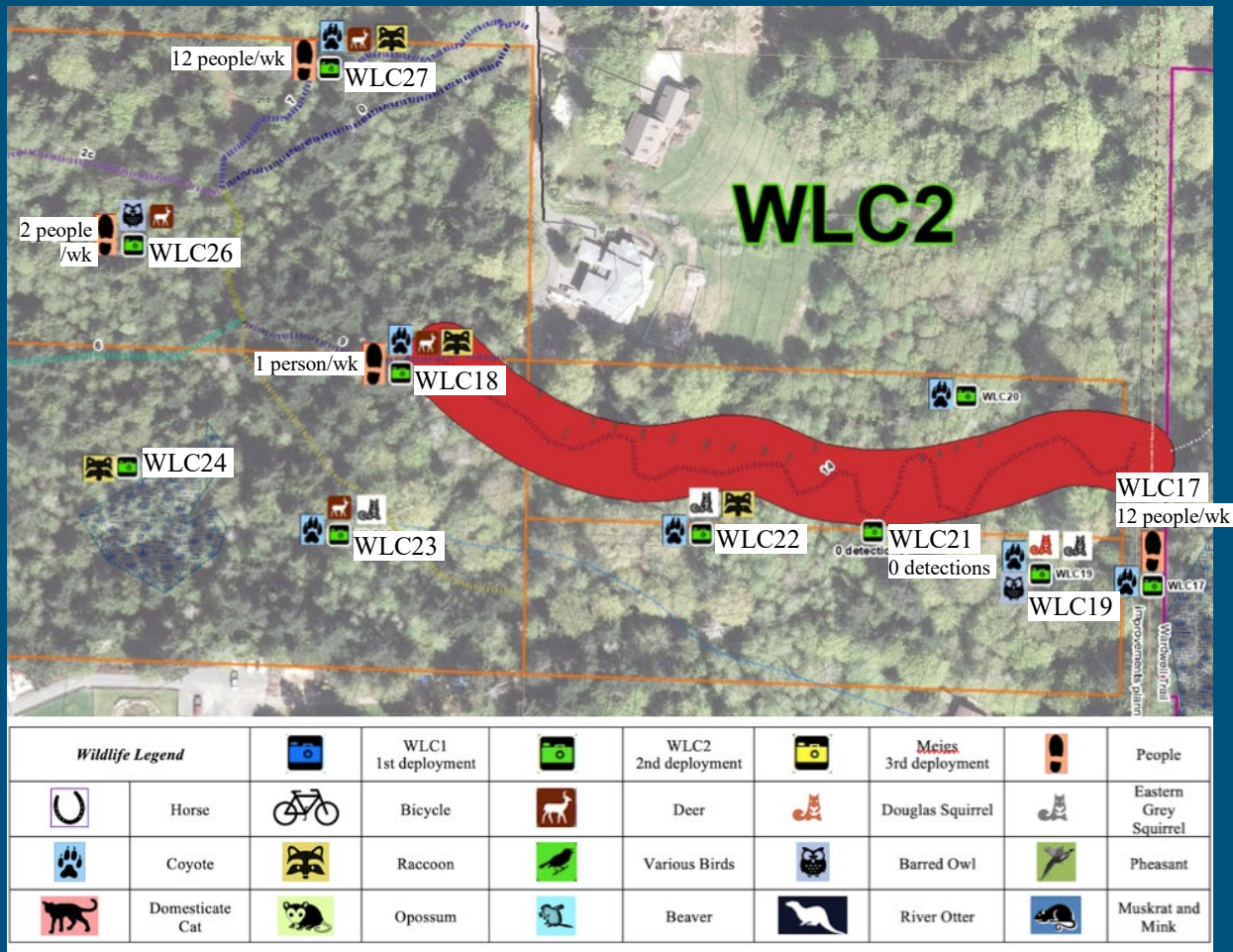
Meigs



Wildlife Legend			WLC1 1st deployment		WLC2 2nd deployment		Meigs 3rd deployment		People
	Horse		Bicycle		Deer		Douglas Squirrel		Eastern Grey Squirrel
	Coyote		Raccoon		Various Birds		Barred Owl		Pheasant
	Domestic Cat		Opossum		Beaver		River Otter		Muskrat and Mink

WLC2

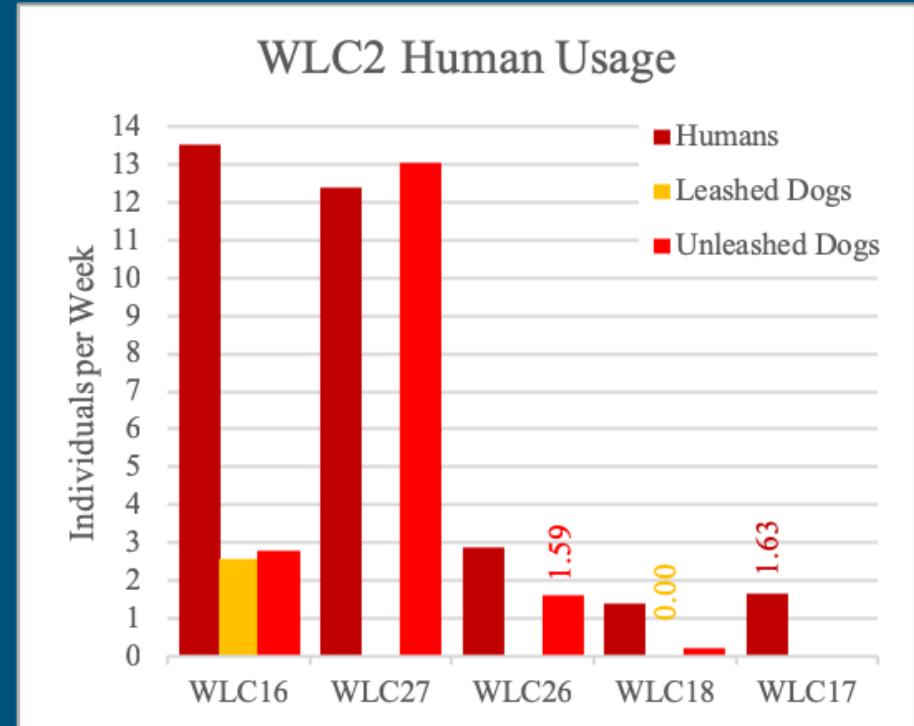
- Small parcel with an overgrown trail system
- Connection with Wardwell Trail
- High wildlife activity
- Four sites experienced moderate usage; WLC16, 18, 26, 27



Proposed Trail Routes in red

WLC2 Human Usage

- Up to 12 people per week, all on the exterior near WLC1 or Meigs
- 45.4% people had dogs
- 82.4% of those dogs were off leash



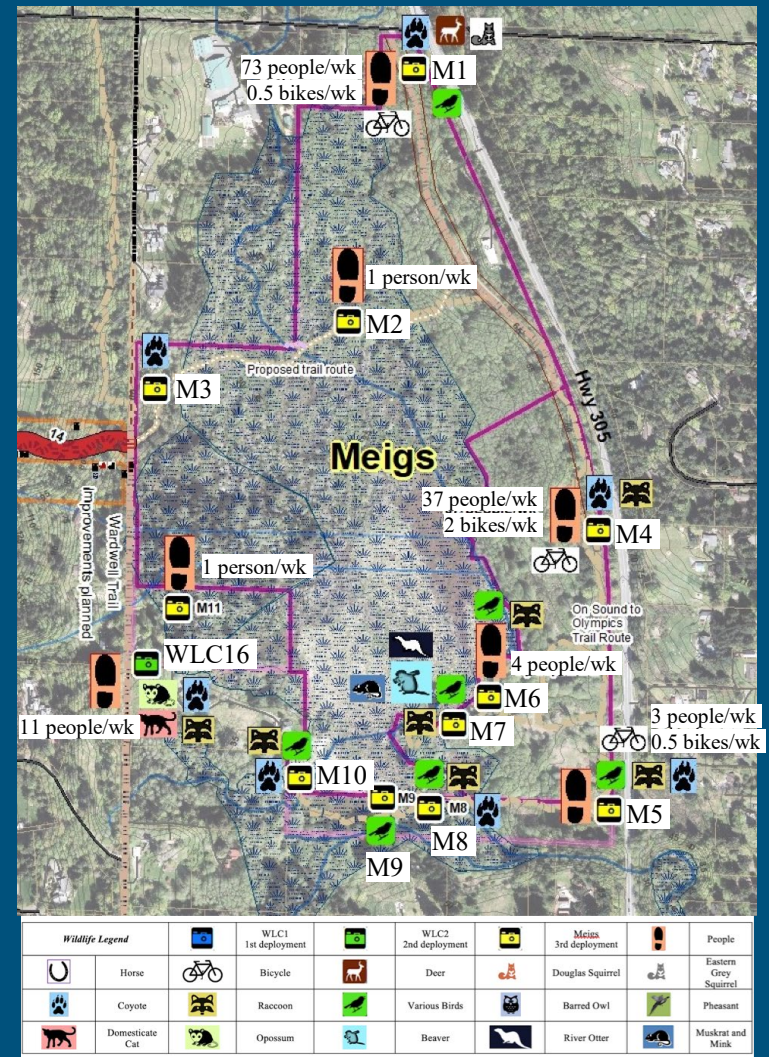
WLC2 Wildlife

- 161.2 wildlife individuals per week
(highest of any study area)
- **Coyote**
- Eastern grey squirrel
- Deer
- Raccoon
- **Barred Owl**
- **Domesticated cat**
- Douglas squirrel
- Opossum



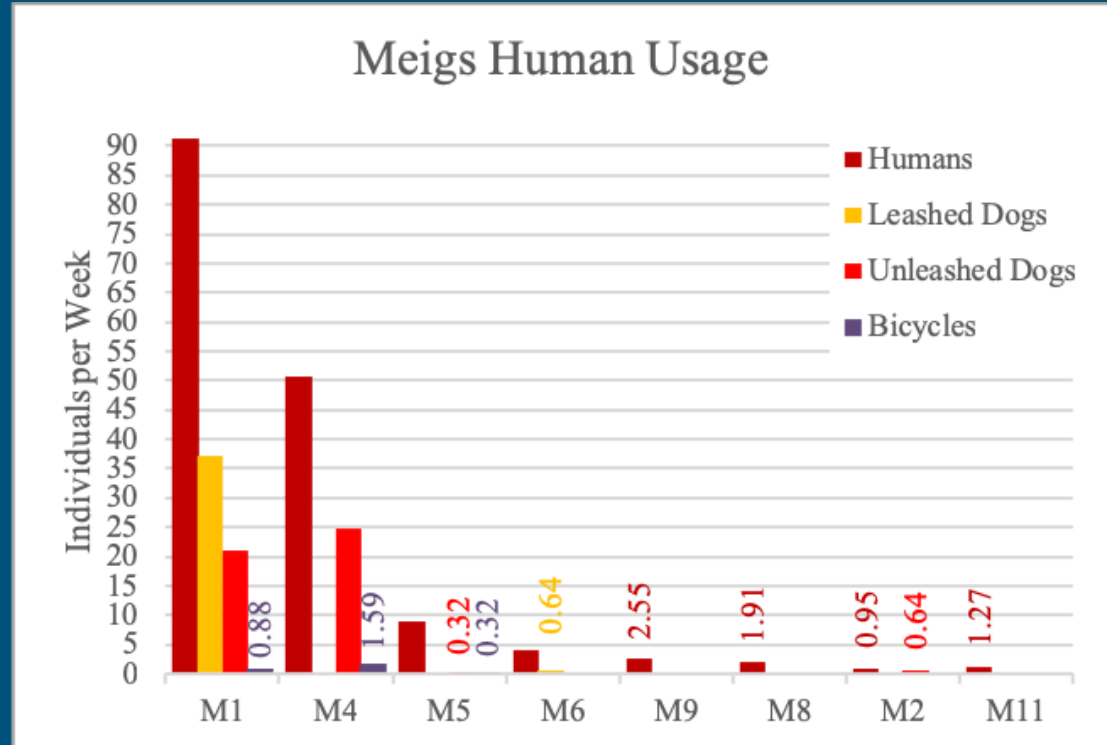
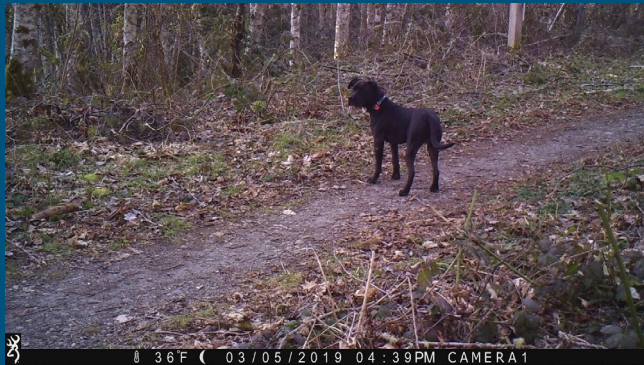
Meigs

- Wetland west of the proposed Sound to Olympics trail
- Potential to connect with Wildlife Corridor Westward
- High human activity
- Two heavily used sites; M1 and M4
- Amphibian survey
- Three bird surveys



Meigs Human Usage

- Up to 73 people per week
(highest of any study area)
- 2.8 bikes per week, only seen on main north to south trail
- 43.2% people had dogs
(lowest of any study site)
- 53.3 % of those dogs were off leash
(lowest of any study site)



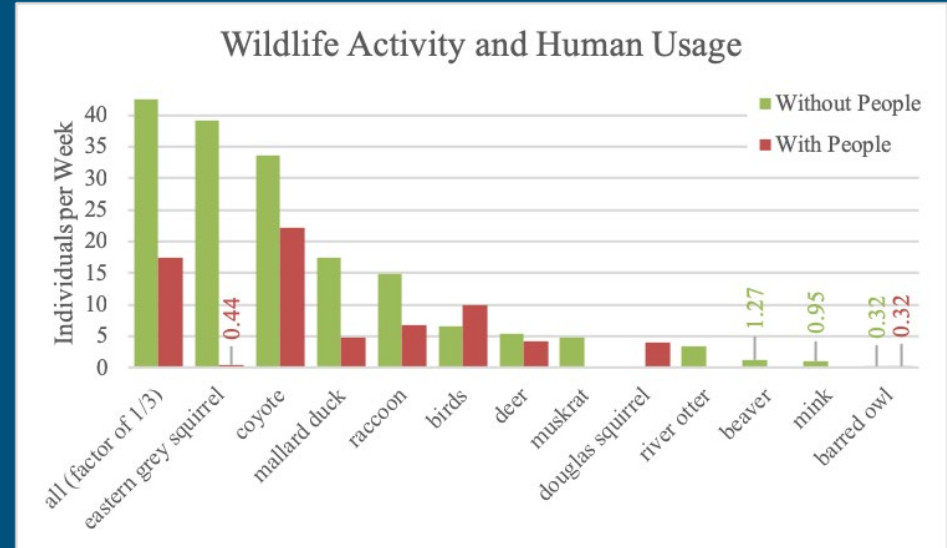
Meigs Wildlife

- *Most diverse of any study area*
- Mallard
- Coyote
- Raccoon
- Wood duck
- Muskrat
- River otter
- Beaver
- Mink
- Deer
- Eastern grey squirrel
- Over 30 bird species
- Red-legged frog, rough-skinned newt & frog egg masses



Wildlife and People

- Wildlife were seen more at sites void of human presence
- Disturbed sites mainly see coyotes, deer and raccoons
- Coyotes are seen at all times of the day, including daytime hours
- Sensitivity to human disturbance is dependent on the species; some species are tolerant



Trail Recommendations

➤ WLC1

- Most used: 2a, 2b & 1b
- Potential closure: 1a & 4b
- Avoid: 13
- Potential expansion: 11 or 12

- *Wetland consideration*

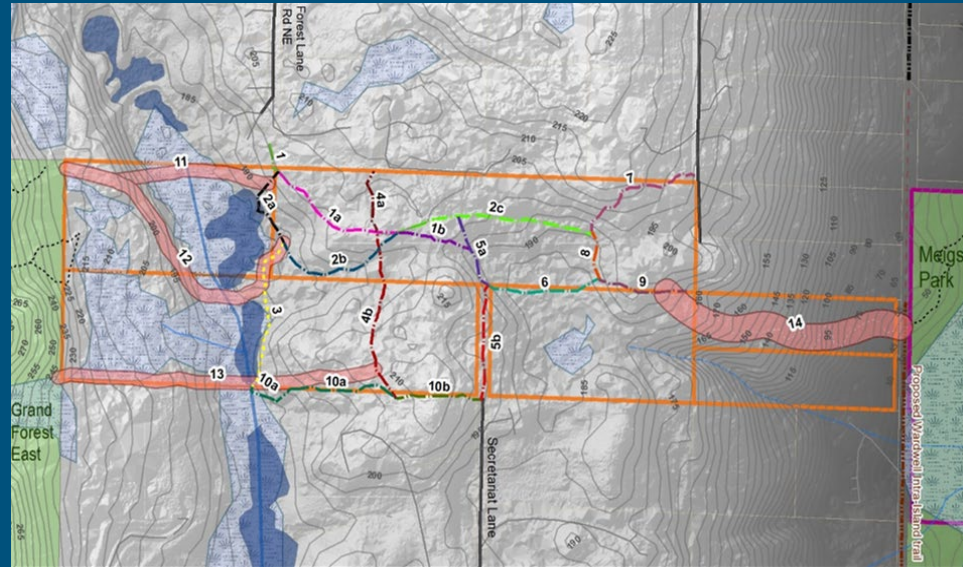
➤ WLC2

- Most used: Wardwell Trail
- Potential expansion: 14

➤ Meigs

- Most used: Proposed Sound to Olympics & middle side trail
- Potential connection: northernmost side trail (*easiest path, least wildlife*)
- Avoid: Middle and southern side trails

- *Wetland, consideration, rare species*



Proposed Trail Routes in red

Acknowledgements

- Gina King, BILT Mentor
- Ankush Puri, fellow intern
- Birder volunteers:
 - Don Willcott
 - Lee Robinson
 - Tim Billo
 - Avery Meeker
- Christina Doherty, herpetologist
- Deb Rudnick and Matt Otepka, waders
- Bainbridge Island Land Trust



Thank you for listening!

Questions or Comments?

