

BAINBRIDGE ISLAND LAND TRUST

FOR EVERYONE. FOREVER.



COMING EVENTS

FREE Invasive Weed Disposal

Sundays, September 22 and 29
10 am to 4 pm at Bainbridge Disposal
Transfer Station, 7215 Vincent Rd

Natural Bainbridge Book Launch

Thursday, Sept. 26 from 5 to 7 pm
Eagle Harbor Book Co.

Bainbridge Island Beach Clean-Up

Saturday, Sept. 28 from 10 am to 2 pm
Calling all who love our shoreline!
Contact Sinclair@bi-landtrust.org

Native Plant Sale

Friday, Oct. 4 and Saturday, Oct. 5
Bainbridge First Baptist Church
See inside for details

First Wednesday Work Parties

Oct. 2, Nov. 6, and Dec. 4
9 to 11 am—Do your part in the
battle against invasive weeds!

Orca Recovery Day Planting Work Party

Saturday, Oct. 19 from 9 am to noon
At the Cougar Creek Preserve

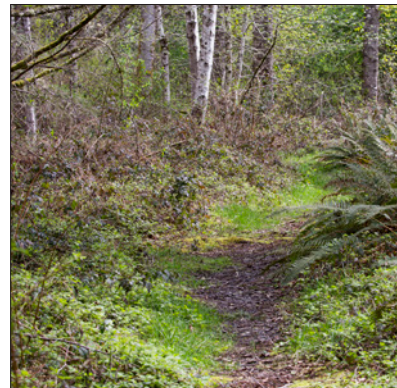
**Check our website for details,
and more! [www.bi-landtrust.org/
news-and-events/events/](http://www.bi-landtrust.org/news-and-events/events/)**

Stand for the Land: Challenges Met and New Goals Set

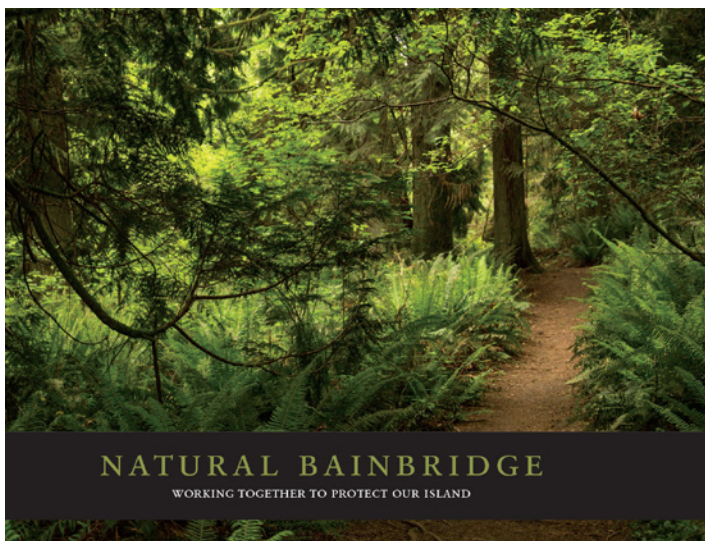
Thanks to the generosity of Islanders, the *Stand for the Land* campaign has surpassed our near-term goals and is now poised to engage in the next stage of fundraising.

MATTY OTEPKA, BOARD MEMBER • This multi-year, multi-property, multi-million dollar campaign to save the last best places on the Island has now raised more than \$3 million toward our overall campaign goal resulting in the permanent protection of three new properties—and least two more on the horizon.

These newly protected lands boast a variety of unique and valuable ecological aspects from pristine estuary to native wetland to mature forest. Throughout the course of the campaign, the Land Trust has been anchored by a small group of generous supporters offering matching challenge grants. More than \$600,000 of challenge grant funds have been accessed from these supporters thanks to the response from the rest of the Island to match and surpass these grants. As we launch the next stage of fundraising, expect to see new challenge grants and matching funds put forth—but more importantly, prepare for some incredibly compelling new conservation opportunities that we can't wait to tell you about! ■



Top left and above: The Miller-Kirkman Preserve boasts 910 linear feet of natural shoreline where our camera trap caught a family of seven otters (including these three) enjoying the summer. Top right: The new Cougar Creek Preserve on Blakely Avenue has a nice path down to a serene pond. Both top photos by Sue Larkin.



The backstory of the Land Trust's new publication, *Natural Bainbridge*, now for sale at Eagle Harbor Book Co.

“This is the first book—the only book—that evokes the feeling of what it’s like to live here. With gorgeous photos and magical illustrations, it then goes beyond to inform us about the natural systems of the island, and how we can—and must—care for them, whether they’re a forest or our own backyard.”

JANICE DANIELSON, OWNER, EAGLE HARBOR BOOK CO.

CHERYL TLAM, OUTREACH COMMITTEE • Welcome to *Natural Bainbridge*, an engaging and beautiful new book that beckons us to explore and safeguard our exquisite preserves, protected spaces, and parks. It delights with useful facts, and stories of the splendid lands and waters of our island.

The book was conceived and produced by a small all-volunteer team of Land Trust supporters — Zan Merriman, Hilary Hilscher, Erin Kellogg, and Cheryl Tlam. The team’s mission was to spread the word about land and water conservation and make the message so compelling that the book would become a must-have for island residents and visitors.

Natural Bainbridge has stunning illustrations by Cameron Snow and photos by Paul Brians—and by other photographers including Sue Larkin, Dawn Bochus, Ron

Friedman, Tom Schworer, Pete Soloutos and Shaun Swalley, all helping to bring our island’s natural areas into everyone’s homes. Cameron Snow’s detailed illustrations owe credit to photographs from George Gerdt, Dottie Tison, and Brad Waggoner.

Consultation with local experts including Maradel Gale, Greg Geehan, Paul Kundtz, Dennis E. Lewarch, Olaf Ribeiro, Deb Rudnick, Alice and Dave Shorett, Barb Trafton, John van den Meerendonk, John F. Williams, and Dallas Young was invaluable in making the book accurate and informative. Sincere thanks to many other islanders who answered questions, offered guidance, and shared their perspectives.

Contributing writers included Andrea Adams, Ken Bennett, Sophie Dotson, David Harrison, Adrian Meidell, Matt Otepka, and Connie Waddington. Local authors Kathleen Alacalá, Lynn Brunelle, Carol Cassella, Jonathan Evison, Alex Fermanis, Suzanne Selfors, and Garth Stein contributed quotes and prose.

Printing assistance was provided by Tim Connolly and editing and proofreading help came from Paula Elliot, and Debbie Rimkus. A very special thanks to Cynthia Sears for underwriting this project. ■

Coming Events: On Thursday, Sept. 26, Eagle Harbor Book Co. will hold a discussion with the book team and Jane Stone, Land Trust Executive Director.

Exhibits: Paul Brians’ photographs will be on display at Bainbridge Performing Arts in November, and Cameron Snow’s illustrations will be at the Bainbridge Island Museum of Art’s Community Gallery in mid-November. Find *Natural Bainbridge* at Eagle Harbor Book Co.—\$19.95, proceeds to the Land Trust!

The cover of *Natural Bainbridge* features a photo by Paul Brians of the trail between two of our largest protected areas, Blakely Harbor and Fort Ward Parks. Below: The Wetlands chapter features a photo of Meigs Park by Tom Schworer, a quote from Alex Fermanis, and an illustration of a Twelve-spotted dragonfly on a piggyback plant by Cameron Snow.



30 years of accomplishments
by the numbers

Established 1989

Nearly 1,400 acres preserved
1,000+ acres are open to the
public

48 Conservation Easements
10 Land Trust-owned
properties

Largest and smallest Land
Trust-owned properties:
35-acre Wildlife Corridor
and 1-acre Fletcher Bay Lots

43 new acres protected by
Stand for the Land so far

1,000 Member Households

500+ volunteers provide
more than **2,000** hours of
service annually

**BAINBRIDGE ISLAND
LAND TRUST**

PO Box 10144
147 Finch Place, Suite 3
Bainbridge Island, WA 98110
Phone: 206-842-1216
email: landtrust@bi-landtrust.org
web: www.bi-landtrust.org

2019 BOARD OF DIRECTORS

OFFICERS

Presidents: Ray Victurine
and Erin Kellogg
Vice President: Ed Gilbert
Treasurer: Asha Rehnberg
Secretary: Cullen Brady

BOARD MEMBERS

Andrea Adams
Nicole Bavo
Grant Blackinton
Gregory Geehan
Sally Hewett
Zan Merriman
Matt Otepka
Phil Rockefeller
Deb Rudnick
Gene Seligmann

STAFF

Executive Director:
Jane Stone
Conservation Director:
Brenda Padgham
Membership & Development:
Laura O'Mara
Conservation Project Lead:
Gina King
Stewardship Coordinator:
Andrew Fraser
Office Administrator:
Debbie Rimkus
Community Engagement
Associate:
Sinclair Ball
Project Associate:
Barbara Shane
Logo drawings: Nate Thomas
We are a non-profit 501(c)(3)
corporation.



On Land Trust conservation easements, landowners participate in designing the restoration plan for their property, and cost-share with the Land Trust by hiring the TCC to perform important restoration or maintenance work. Additional support for the crew comes from the Land Trust and its members, and Bainbridge Community Foundation. A grant from the Rotary Club supported our TCC equipment needs for ongoing stewardship of our lands.

Students aged 14 to 18 interested in the 2020 TCC program are encouraged to contact Land Trust Stewardship Coordinator Andrew Fraser at andrew@bi-landtrust.org. ■

Land Trust Teen Conservation Crew Making A Difference! By the Numbers:
12 students + 2 crew leads + 1 staff member + 1,100 hours worked = 4.35 acres improved + 150+ ivy trees cleared
For the ninth year in a row, the Land Trust was pleased to employ a hardworking crew of local teens.

JOHANNA ROSENBOOM AND MIA PEEPLES, 2019 INTERNS
Our Teen Conservation Crew (TCC) supports ongoing conservation efforts on Land Trust protected lands and is an important element of our stewardship program. It provides a fantastic opportunity for students to learn about land conservation and restoration, and contribute to the health of our local natural spaces. The TCC worked diligently for six weeks removing invasive species such as blackberry, English ivy, Scotch broom, spurge laurel, and holly from private conservation easements and Land Trust-owned properties.

This summer we were lucky to have two intern crew leads, Mia Peeples and Johanna Rosenboom.

Johanna was glad to be back for her fifth year with the crew, and third year working as a Land Trust intern. Seeing how crew efforts make a lasting impact on properties has been very gratifying to her. She is heading into her senior year at Oberlin College, and hopes to graduate in 2020 with degrees in environmental studies and biology.

Mia Peeples has worked on the Teen Conservation Crew the past two years and was excited to be an intern this summer at the Land Trust. She's glad to be able to continue working with the TCC because she loves knowing that the work she is doing is helping restore native ecosystems. This fall, she will be returning to Rice University for her sophomore year, where she is majoring in civil and environmental engineering. She will also be interning on campus, restoring a native prairie ecosystem in Houston.

Top: Intern Crew Leads Johanna Rosenboom, left, and Mia Peeples, right. Below Left: a salamander found by the TCC at Salmonberry Farm. Below right: Our 2019 Teen Conservation Crew! Photos: Johanna Rosenboom





SWORD FERN

FALL CONSERVATION DOUBLE FEATURE!

2 days of FREE Invasive Weed Disposal

Sundays, September 22 and 29 from 10 am to 4 pm

Bainbridge Disposal Transfer Station, 7215 NE Vincent Road

Bring your invasive weeds to the Bainbridge Disposal Transfer Station and the Land Trust will pay the price of disposal. Invasive plant targets are Scotch broom, English holly, English ivy, Himalayan blackberry, tansy ragwort, and English laurel as well as the noxious weeds on the county's "Dirty Dozen" list. Learn more at www.bi-landtrust.org/free-disposal.

Native Plant Sale

Friday, Oct. 4 ■ 5 to 6:30 pm Land Trust Member Pre-Sale

Saturday, Oct. 5 ■ 9 am to 12 pm Open to Everyone

Prep your yard and garden for new native plants! We offer a selection of native ground-cover, trees, and shrubs that are built to withstand our long wet winters and dry summers, and are more resistant to disease.

Learn more and view the full plant selection at www.bi-landtrust.org/get-involved/native-plants

Native plant photos: Sue Larkin



SERVICEBERRY



VINE MAPLE



SALAL



2019 PRESERVATION PARTNERS PARTY

On Saturday, July 20, we enjoyed a perfect summer evening out on the land celebrating 30 years of conservation and stewardship on Bainbridge. Thanks to the support and commitment of everyone in attendance, the Land Trust was able to meet our fundraising goal. All proceeds from this event are directed to the Preservation Partners Fund which is administered by the Board of Directors with the sole purpose of supporting the Land Trust's mission: to preserve and steward the diverse natural environment of Bainbridge Island. If you would like to participate next year—as a guest, sponsor, supporter, or volunteer—please contact Laura O'Mara at laura@bi-landtrust.org.

Special thanks to our 2019 sponsors and supporters

Sponsors

Jen Pells Real Estate
Windermere Real Estate
Jason & Anna Bausher
John S. Adams, The Arbor Group at UBS
Aspect Consulting
First Federal Bank
J. Kelly & Associates
Sally Hewett, DDS
Susan Wiggs – Laugh, Cry, Dream, Read
Town & Country Markets, Inc.
Bainbridge Senior Living
Laird Norton Wealth Management
Blackwood Builders Group
The Number Factory, Inc.
Sound Native Plants
Roby King Gallery
Wilderness
MacDonald & Associates, PLLC
Charter Real Estate, Mercury Michael

Supporters

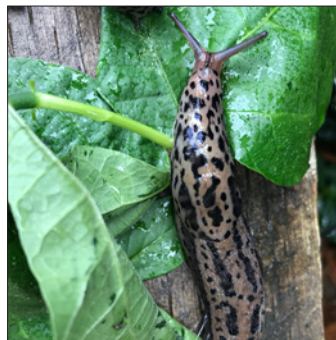
Law Office of Lynda McMaken
Carney Cargill, Inc.
Brackenwood Capital Management

The 2019 Preservation Partners Party was held on the Freedman Conservation Easement. Below, Corinne Gooden, Connie Waddington, and Leslie Whalen were among 400 attendees who participated in a lively auction and paddle call. Guests were able to tour the Land Trust's oldest conservation easement, which sits adjacent to the Freedman's. Altogether, the Land Trust holds nearly 35 acres of private, permanently protected lands on the corner of Miller Road and Highway 305. Photos: Sue Larkin



Which are beneficial natives and which are the garden pest invasives?

Banana Slugs, *Ariolimax columbianus*, are native to the forest floors along North America's Pacific coastal coniferous rainforest belt from Southeastern Alaska to Santa Cruz, California. They can be all yellow, or spotted with brown. They are detritivores, or decomposers processing leaves, animal droppings, moss, and dead plant material into soil humus. They have a fondness for mushrooms, spread seeds and spores when they eat, and excrete a nitrogen-rich fertilizer. They are an important aspect of our ecosystem. Raccoons, garter snakes, ducks, geese and salamanders sometimes eat banana slugs; they roll the slugs in soil to bind the slime. Juvenile banana slugs are sometimes eaten by moles or shrews. They are less common in gardens but often seen in the woods. Find them? They are the two yellow slugs, one with and one without spots. Photos: Paul Brians



Black slugs, in the family *Arionidae*, are black when mature but young black slugs tend to be brown or ivory whitish, turning to grey before becoming black at maturity. Like banana slugs, they function as decomposers—but they are often omnivores, preying on other organisms and consuming vegetative matter—including agricultural crops. Native to Europe, the black slug is an invasive species in the US. Find it? It is the all black slug with no spots. Photo: Paul Brians



Spotted Leopard Slugs, *Limax maximus*, are another invasive and common garden pest. They have spots on the mantle and spots or tiger stripes on the upper surface of their foot. They are about 4 inches long and four times faster than a banana slug, which is useful to them as they are predatory and eat other slugs. Find it? It is grey-brown with black spots and stripes.



Did you recognize the Land Trust property from the photo on the back page? It's on the Hilltop trail in the West Grand Forest, near a major trail intersection. Photo: Paul Brians

Joyce and Alan Rudolph turned their love of the Island into a legacy for future generations.

Meet a couple who are dedicated to helping make sure our future work is possible. Joyce and Alan explain why:

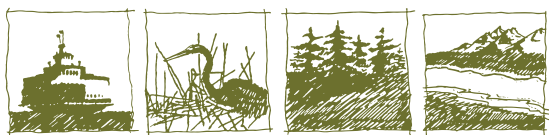
"We have put the Bainbridge Island Land Trust in our will.

We want to ensure that future generations of Islanders will experience the natural splendor of this beautiful place. The Land Trust is committed to protecting, restoring, and maintaining nature in all its forms on our Island and they deserve the support of everyone living here.

We hope by allocating funds for their use when we're gone, the Bainbridge Island Land Trust will continue to lead the way in Island stewardship."

The Land Trust is fortunate to have support from dedicated members who want to ensure that our work protecting Island natural areas continues in perpetuity. Joyce and Alan recently joined an inspiring group of people who have enhanced their commitment to the Land Trust by making a planned gift, such as a bequest, a gift that pays income, or a gift of appreciated securities.

Please join them in including the Bainbridge Island Land Trust in your estate plans. The future of our Island depends on it. For questions or more information about this opportunity, please contact Executive Director Jane Stone, jane@bi-landtrust.org, or call Jane at (206) 842-1216.



BAINBRIDGE ISLAND LAND TRUST

FOR EVERYONE. FOREVER.

PO Box 10144
Bainbridge Island, WA 98110

HAVE YOU RENEWED YOUR MEMBERSHIP?
DON'T MISS OUT ON EARLY
ACCESS TO THE NATIVE PLANT SALE!

COMING EVENTS

FREE Invasive Weed Disposal

Sundays, September 22 and 29
10 am to 4 pm at Bainbridge Disposal
Transfer Station, 7215 Vincent Rd

Natural Bainbridge Book Launch

Thursday, Sept. 26 from 5 to 7 pm
Eagle Harbor Book Co.

Bainbridge Island Beach Clean-Up

Saturday, Sept. 28 from 10 am to 2 pm
Calling all who love our shoreline!
Contact Sinclair@bi-landtrust.org

Native Plant Sale

Friday, Oct. 4 and Saturday, Oct. 5
Bainbridge First Baptist Church
See inside for details

First Wednesday Work Parties

Oct. 2, Nov. 6, and Dec. 4
9 to 11 am—Do your part in the
battle against invasive weeds!

Orca Recovery Day Planting Work Party

Saturday, Oct. 19 from 9 am to noon
At the Cougar Creek Preserve

Check our website for details,
and more! [www.bi-landtrust.org/
news-and-events/events/](http://www.bi-landtrust.org/news-and-events/events/)



Photo: Paul Brians

QUIZ: ON WHICH LAND TRUST PROTECTED PROPERTY
IS THIS HUGE WESTERN RED CEDAR TO BE FOUND?

