

Discovery



Discovering the Wildlife Corridor

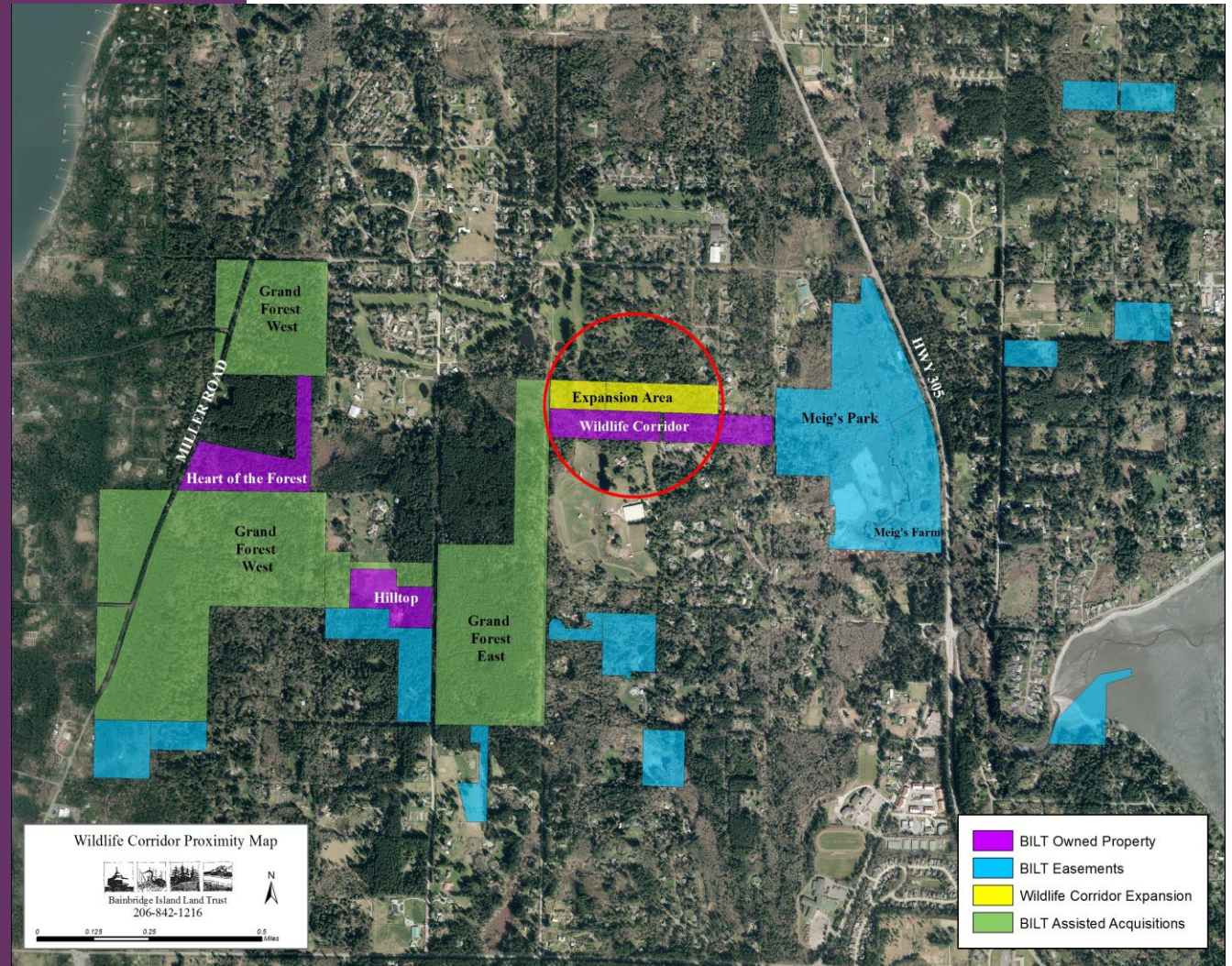
By, Malerie Fleischman

-Brenda Padgham

- Deborah Rudnick

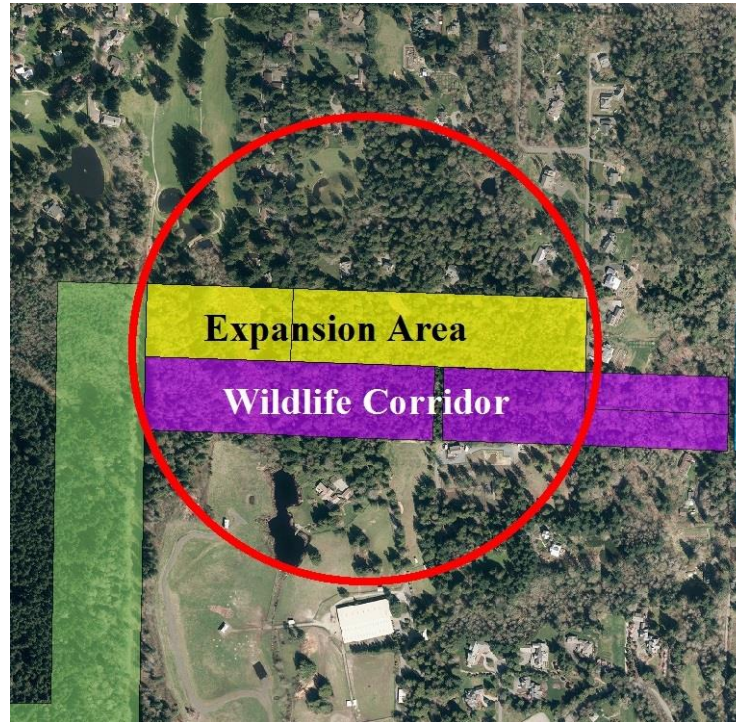
What We Know

- ✓ Wildlife Corridor
- ✓ Wetland
- ✓ Domestic Activity



Experiment

- 1 Corridor



- 1 Objective

- *To evaluate the use of the BILT Wildlife Corridor property by humans and wildlife, and to use this information to inform conservation management of the property in the future.*

Resources

- Internet, internet, internet
 - Trailcampro.com
 - Browningtrailcameras.com
 - Tenergy.com
 - Reviews
- Camera Suppliers
 - John – Trailcampro employee
- Previous Users of Camera Trap Equipment
 - Karen Salsbury

Choosing a Camera

- Trigger Speed
 - .75s
- Batteries
 - 6
- Flash
 - Infrared
- Size
 - 4.75" x 4" x 3"
- Cost
 - \$129.95



The Browning Strike Force

Materials

- 1 Trimble
- 8 Cameras
- 8 Security Cases
- 8 Locks
- 16 SD Cards
- 96 Rechargeable Batteries



The Browning Strike Force

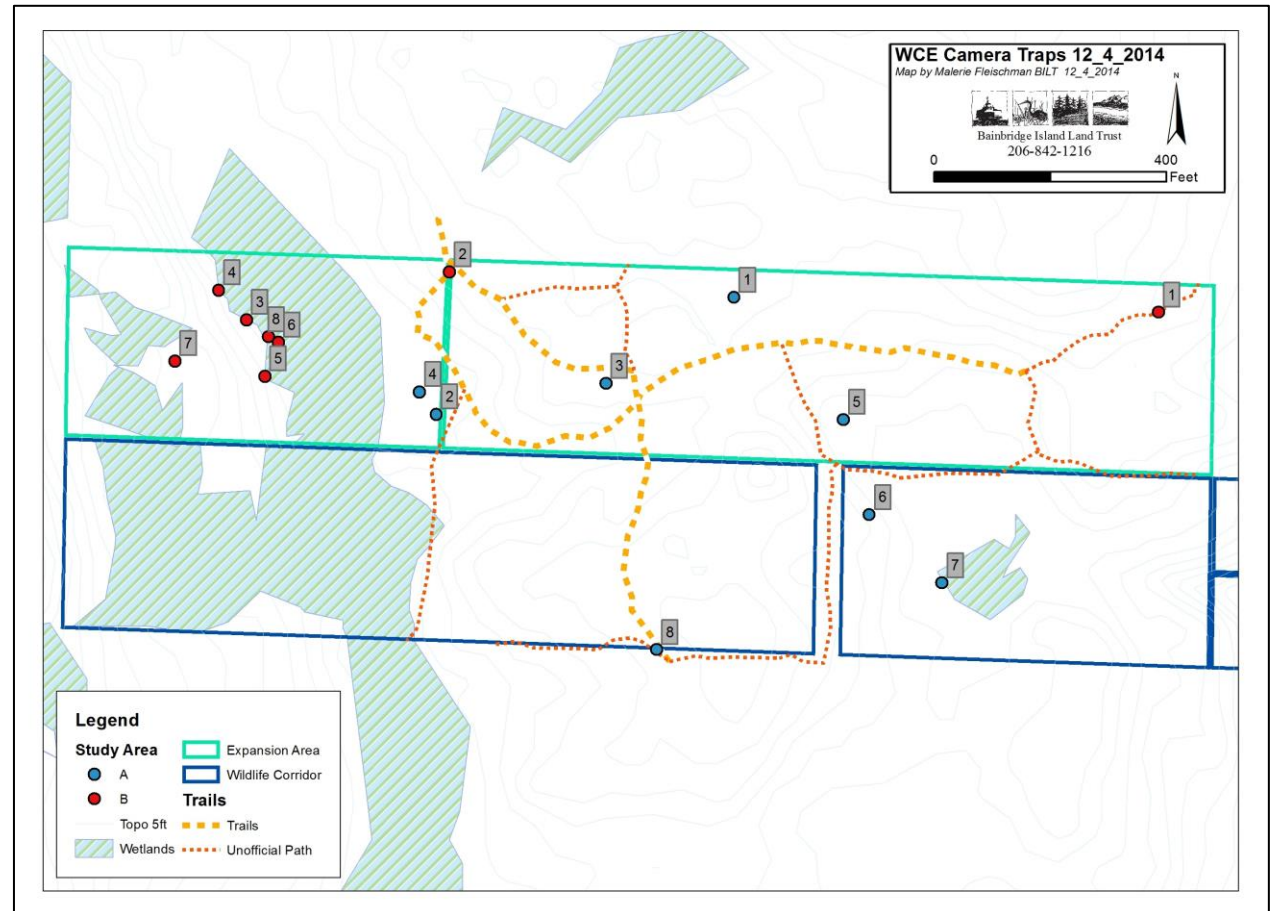
Methods

- Label all materials

- Split property into areas A and B

- Identify potential spots for camera placement for Study Area A

- Record



Methods (cont)

- Position Cameras

- Record details

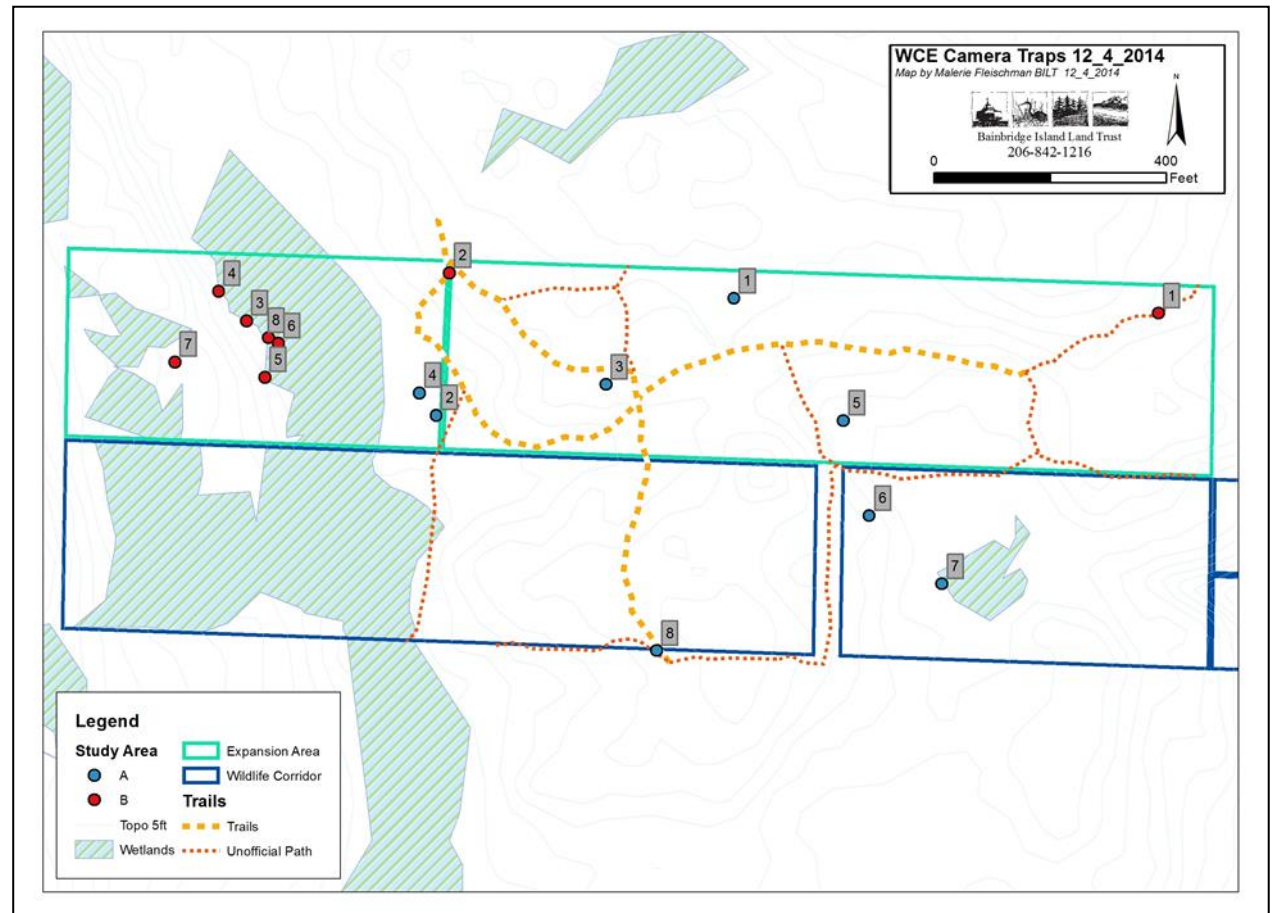
- Check Weekly

- Maintenance

- Review Photos

- Label and organize

- Rinse and Repeat for Study Area B



Data Forms

■ Form 1

- Monthly
- Major changes
- Camera placement

Form 1:	(filled out at initiation of survey and at conclusion)						
Property Name	Anderson Property						
Approx Location	Study Area B						
Camera ID#	Habitat type	Date Placed	Time Placed	Camera Set Height	Camera Set Direction	Date Retrieved	Notes
1	Trail side	9/18	11:55 am	2 1/2 ft	S	10/16/14	
2	Trail junction	9/18	12:51	3 1/2 ft	NE	10/16/14	Replace Put back out into field 11/13
3	beaver tree	9/18	1:55	2ft	E		
4	wetland	9/18	1:07	6ft	NE	11/11/14	dead
5	wetland	9/18	1:55	4ft	N		
6	game trail	9/18	2:15	3 2ft	NW		
7	open upland forest		2:20	3ft	W		
8	wetland	9/18	2:15	2.5ft+3	NE		
1	S. end east of pond	10/16	12:45	4ft	SW		
2			9:54				

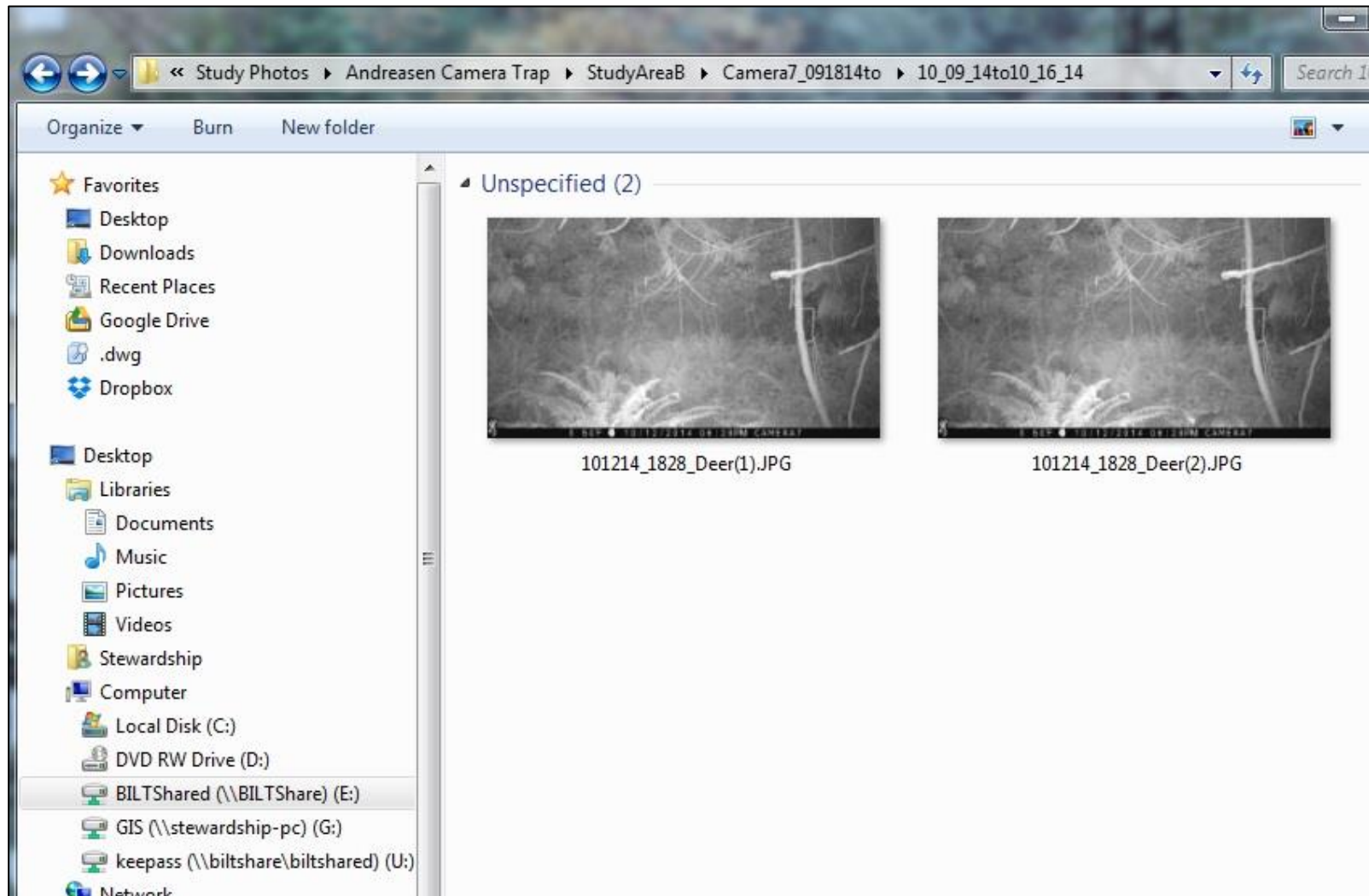
Data Forms

■ Form 2

- Weekly
- Minor changes
- Camera maintenance

Form 2:									
Camera ID: C-1 set 9-18-14									
Check Date	Battery Level	# Photos Recorded	SD card replaced ? Y/N	Date/Time Reset	Field Comments	Photos Transferred to Office? Y/N	# of Species Caught	SD Card Reformatted Y/N	Notes
9/25	30%	64						Y	
10/02	33%	40		10/2 11:48				Y	
10/8	32%	80	Y	10/9 11:17				Y	
10/16	33%	64						Y	reset to Area A
10/22/14	30%	32	Y	10/22/14 8:10				Y	Sens 11kw batt - check next time
11/5/14	0%		Y		11/5/14 needs batteries			Y	faulty cam
11/6/14	80%	NA	Y	11/6/14 12:13	Changed batteries			Y	faulty SD card
11/11/14	33%	32	Y	11/11/14 12:5V				Y	
11/19/14	30%	32	Y	11-19-14 15:30				Y	
12/1	19%	?						Y	low batt

Labeling Data



Splitting the Property

Study Area A

- Initial Assumptions
 - Moderate- to- Heavy Human Presence
 - Domestic Animals
 - Moderate Wildlife
- Reality
 - ✓ Heavy Human Presence
 - ✓ Domestic Animals
 - ✓ Moderate Wildlife

Study Area B

- Initial Assumptions
 - No Human presence
 - No Domestic Animals
 - Relatively High Level of Wildlife
- Reality
 - × Human Presence
 - × Domestic Animals
 - × Not Relatively High Wildlife

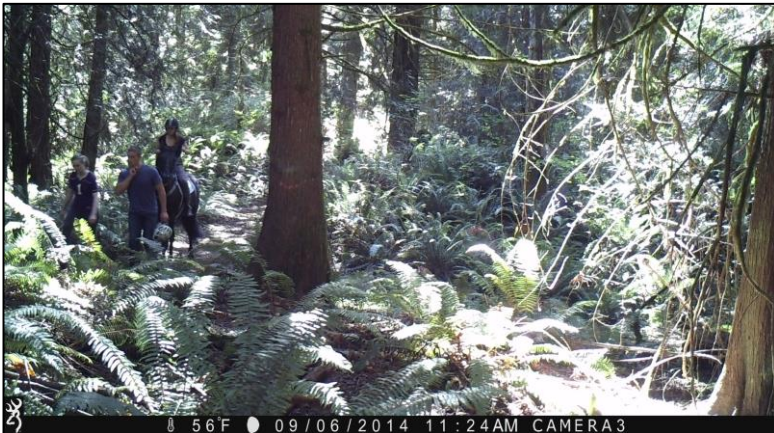
Study Area A – Camera 1



Study Area A- Camera 2



Study Area A- Camera 3



Study Area A- Camera 4



Study Area A- Camera 5



Study Area A- Camera 6



Study Area A- Camera 7



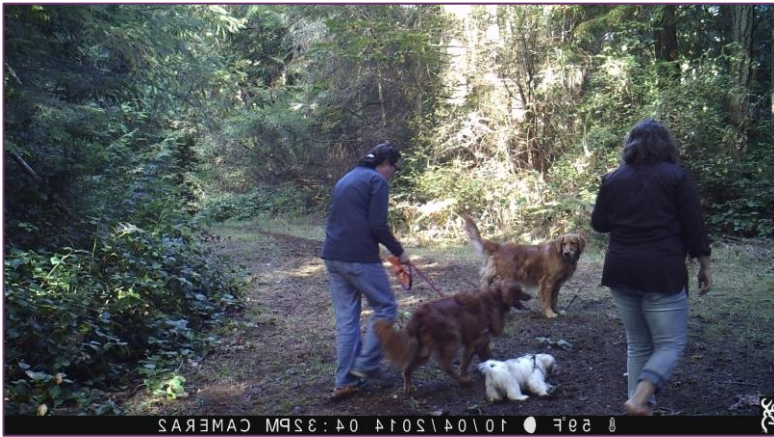
Camera 8



Study Area B- Camera 1



Study Area B- Camera 2



Study Area B- Camera 3



Study Area B- Camera 4



Study Area B- Camera 5



Study Area B- Camera 6



Study Area B- Camera 7



Study Area B- Camera 8



The Team



Results and Observations



- Total Observations

- Study Area A - 1,672
- Study Area B - 365

- Human Behavior

- Study Area A – Hiking, Biking, Horseback Riding, Fishing
- Study Area B – Hiking, Fishing

Discussion



- How is the property used?
 - Hiking, Dog Walking, Horseback Riding, Fishing
- Next Steps
 - Continue monitoring the sites
 - Human activity vs wildlife
 - Seasonal changes
 - Data Analysis- Capstone
 - Educational Opportunities
 - Educational signs